



H427

The rugged H427 delivers performance, durability and precision for big timber. With heavy-duty features and a large capacity, this powerhouse head is made for late thinnings to the final cut.

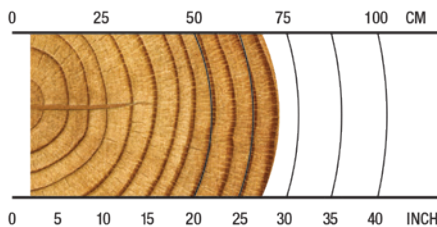
OVERVIEW

Harvesting in late thinnings; regeneration harvesting; tracked and wheeled machine applications.

APPLICATIONS

Softwood harvesting
Mixed stand (hardwood and softwood) harvesting
Multi-tree harvesting

RECOMMENDED RANGE



5-70 cm / 2-27.6 in.

SPECS



1655 kg / 3,649 lb.
Weight (Without Rotator & Link)



28 MPa / 4,061 psi
35 MPa / 5,076 psi
Max Hydraulic Requirements



720 mm / 28.3 in.
Max Upper Delimb Opening



720 mm / 28.3 in.
Max Feed Roller Opening



760 mm / 29.9 in.
Max Cutting Capacity



18-25 metric ton
Carrier Size



20-30 metric ton
Carrier Size

H427 HARVESTING HEAD

SPECIFICATIONS

DIMENSIONS

Width, head open (mm/in.)	1777 / 70
Width, head closed	1447 / 57
Height without rotator and link	1779 / 70
	1870 / 74 with top saw

WEIGHT

Excluding rotator, link and some options (kg/lb.)	1655 / 3,649
---	--------------

DELIMBING

Delimbing knives	4 moving, 2 fixed
Delimbing diameter, tip to tip (mm/in.)	490 / 19.2
Maximum opening, upper knives (mm/in.)	720 / 28.3
Maximum opening, lower knives (mm/in.)	800 / 31.5

DRIVE

Quantity of drive rollers	4
Motor cc - option 1	500 / 780cc (single speed) (@ 350 bar)
Gross feed force - steel feed wheels (kN)	40
Motor cc - option 2	1014 / 507 / 315cc (multi-speed)
Gross feed force - steel feed wheels (kN)	42
Motor cc - option 3	1043 / 630cc (single speed)
Gross feed force - steel feed wheels (kN)	43
Maximum feed speed (m/s)	4.8, 3.6, 5.9
Maximum roller opening (mm/in.)	720 / 28.3
Minimum diameter (mm/in.)	50 / 2

TOP SAW

Maximum cut diameter (mm/in.)	450 / 17.7
Length of saw bar (mm/in.)	670 / 26.4
Chain type (mm/in.)	10 / 0.404
Top saw motor displacement (cc)	14

BUTT / FELLING SAW

	SuperCut 100S saw unit, automatic chain tensioning
Maximum cut diameter (mm/in.)	760 / 29.9
Length of saw bar (mm/in.)	900 / 35.4
Chain type (mm/in.)	10 / 0.404
Saw motor (cc)	32
Oil tank capacity (l)	14.3

CARRIER RANGE

Wheeled (metric tons)	18-25
Tracked (metric tons)	20-30

SPECIFICATIONS

HYDRAULIC SYSTEM

Maximum operating pressure (Mpa/PSI)	35 / 5,076
Recommended pump capacity (l/min., gal/min.)	260-370, 69-98

CONTROL AND MEASURING SYSTEM

TimberRite H-16

OPTIONAL EQUIPMENT

Rotator options
Hoses through junction box (direct hosing not available)
Multi-tree handling (MTH) (not available with topsaw)
HD tilt frame
Top saw
IHC top delimbing knife
Wide or classic top delimbing knife
Processing knives
Measuring wheels (four options: std, grooved, Euca/MTH & spike)
Feed motors
Feeding pressure 280/350 bar
Feed wheels:
V-type MTH
Steel thumbnail
Eucalyptus debarking
Mense aggressive
Steel ribbed
Steel ribbed MTH
Moipu aggressive
Steel thumbnail hardwood
Mense V-TEC
Moipu extreme
HD feed motor covers
Saw bar and chain grease lubrication
Chain and saw-bar kits
Find-end sensor
Hydraulic hose kit
Color marking
Snow protection
Stump treatment (nozzles & through bar)
Debarking options
Uptime kit